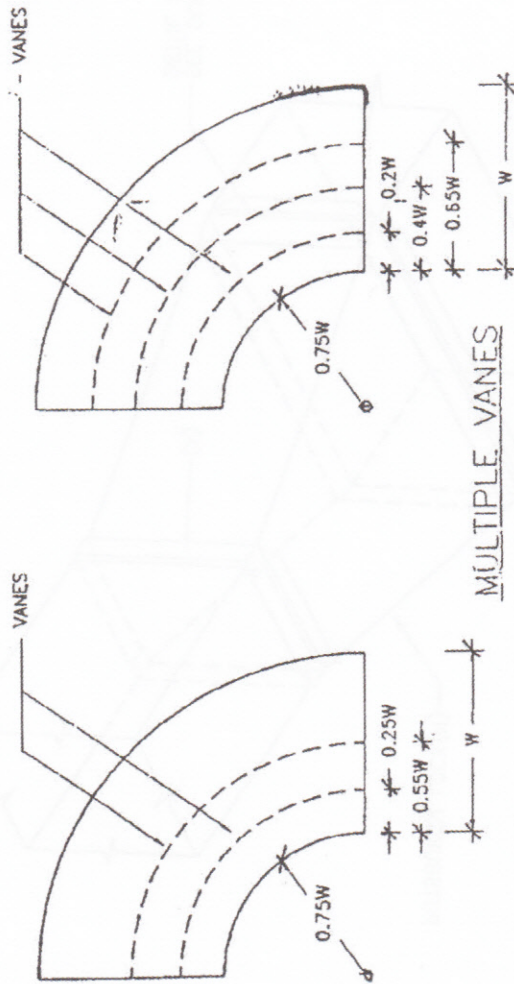


SINGLE VANE

DUCT WIDTH UP TO 12 INCHES. DUCT WIDTH 13-20 INCHES



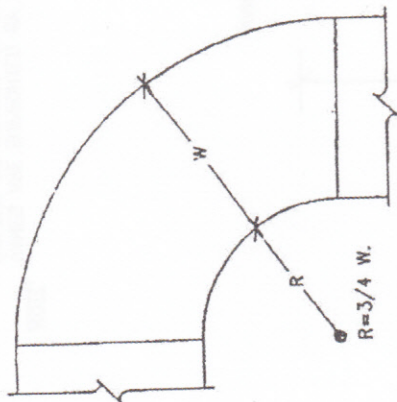
MULTIPLE VANES

DUCT WIDTH 21-40 INCHES. DUCT WIDTH 41 INCHES AND LARGER.

# RADIUS ELBOW TURNING VANES



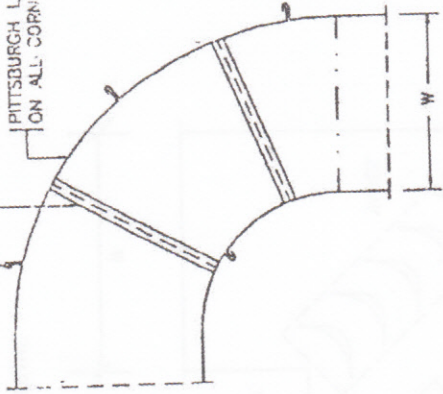
STANDARD RADIUS ELBOW.



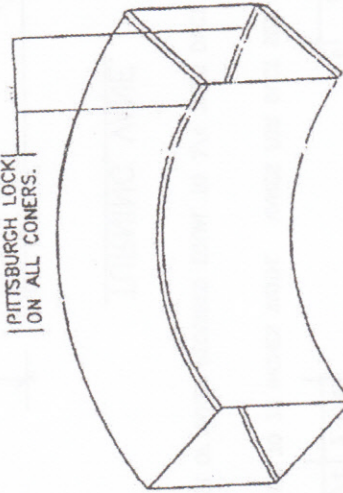
STANDING SEAMS OR  
ANGLE REINFORCING

PITTSBURGH LOCK  
ON ALL CORNERS.

LARGE ELBOW CONSTRUCTION  
REQUIRING MULTIPLE SHEETS.



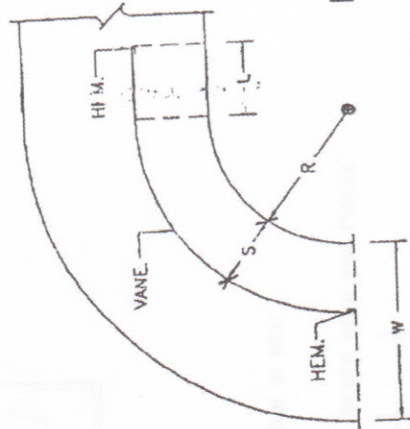
PITTSBURGH LOCK  
ON ALL CORNERS.



SMALL ELBOW CONSTRUCTION SHORT.

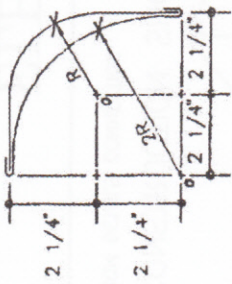
SEE DUCT CONNECTION DETAILS CONNECTION.

RADIUS ELBOW.



$R = \text{MINIMUM } 1/3 W.$   
 $S = L = 1/3 W.$

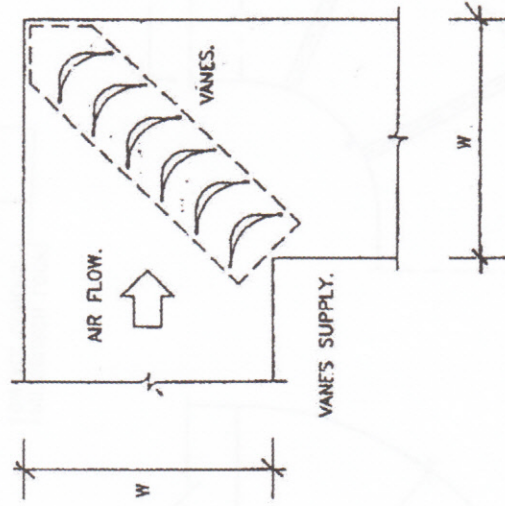
# ELBOW CONSTRUCTION



VANES FOR DUCT SIZE TO 20 INCHES WIDTH. VANES FOR DUCT SIZE 21 INCHES WIDTH AND LARGER.

**NOTE.** NUMBER OF VANES REQUIRED EQUAL TO 3/4 TIMES DUCT WIDTH IN INCH.

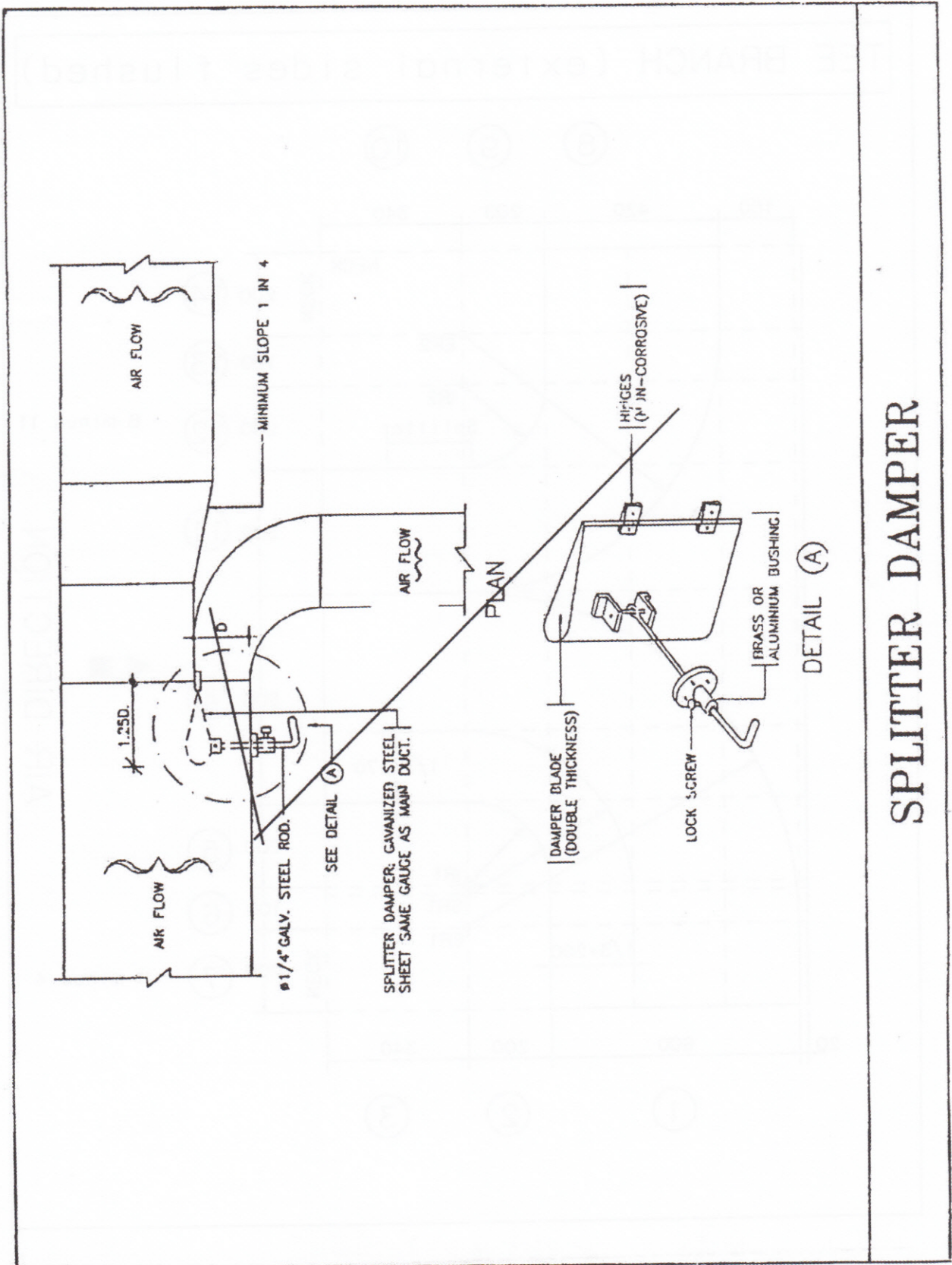
TURNING VANE.



**NOTE.** VANES ARE SUPPORTED BY SEPARATE FRAME BOLTED OR RIVETED TO ELBOW.

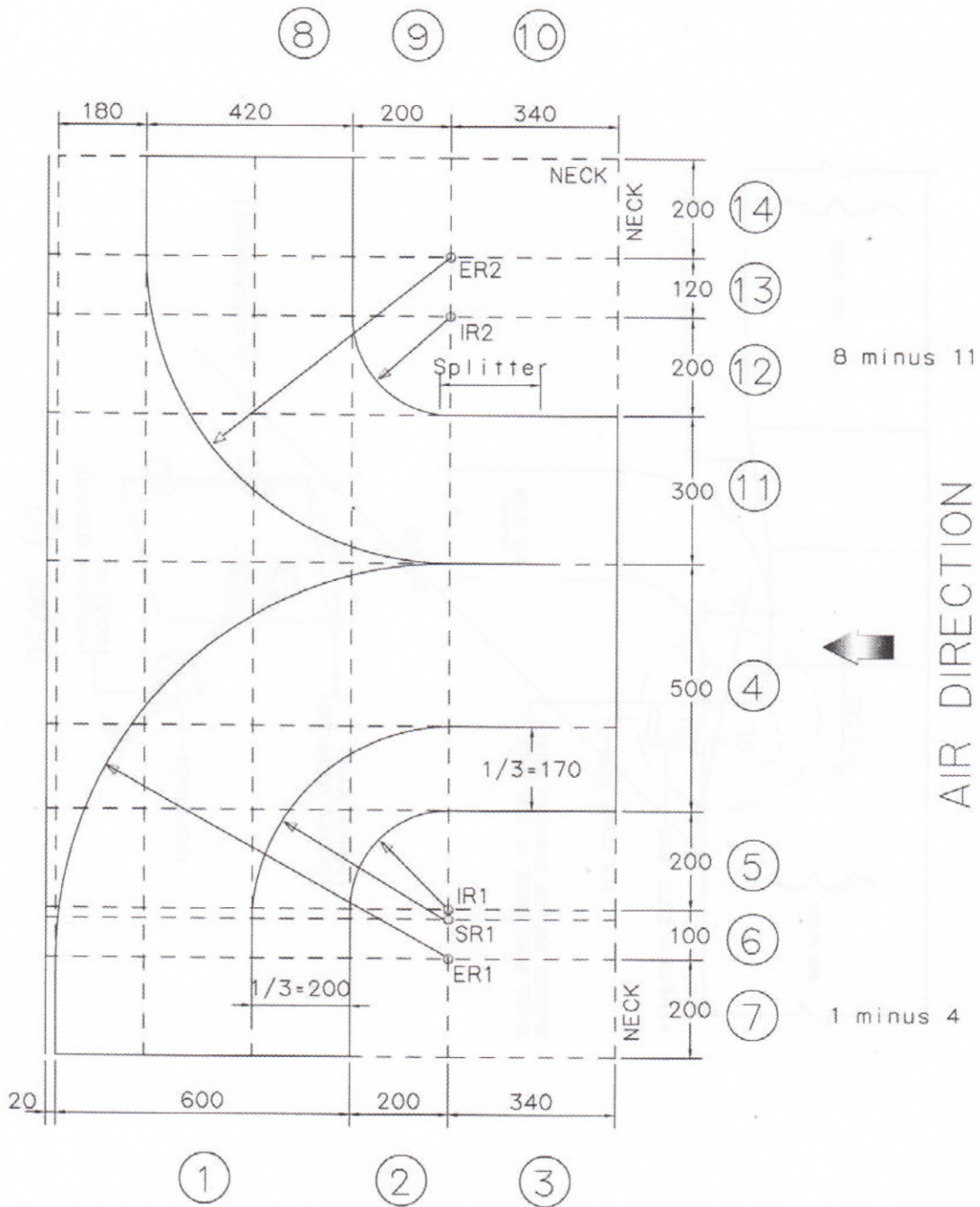
**SQUARE ELBOW TURNING VANES**





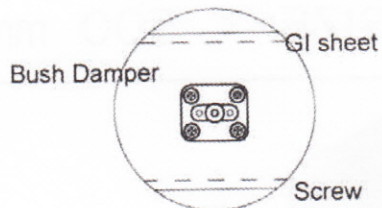
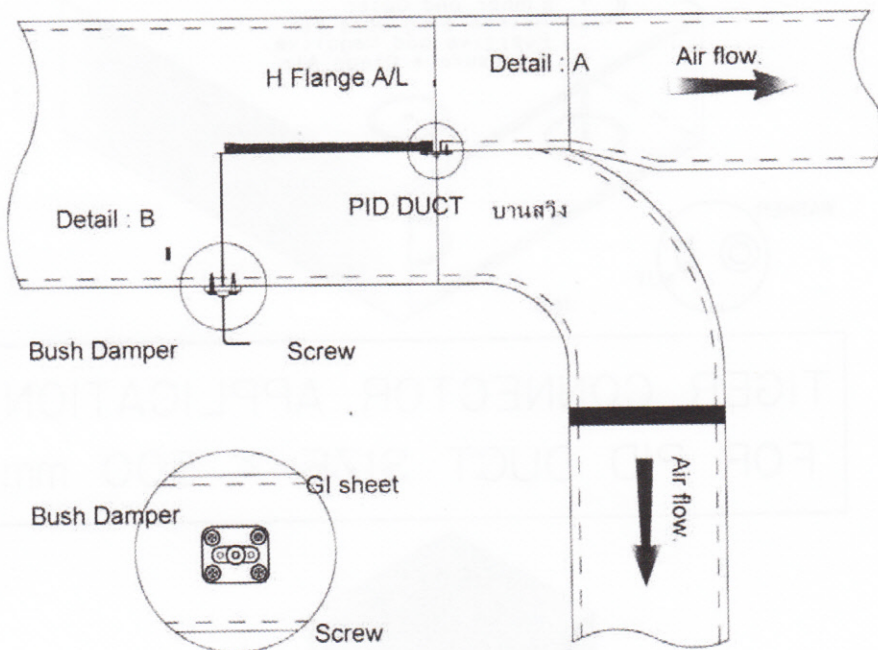
# SPLITTER DAMPER

TEE BRANCH (external sides flushed)

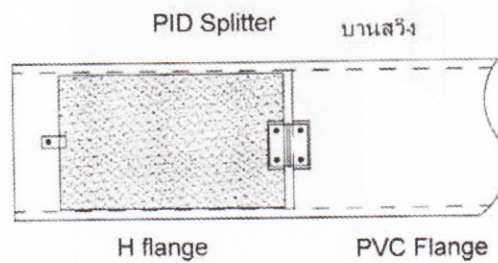




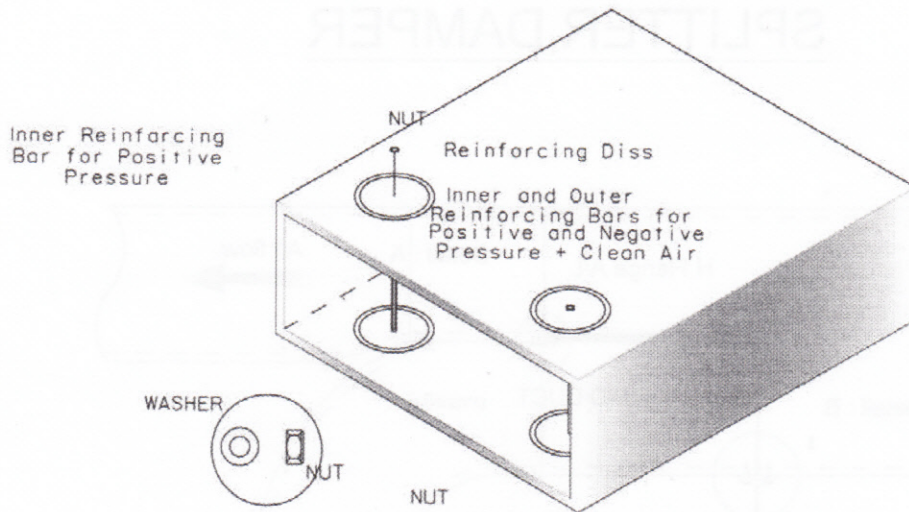
# SPLITTER DAMPER



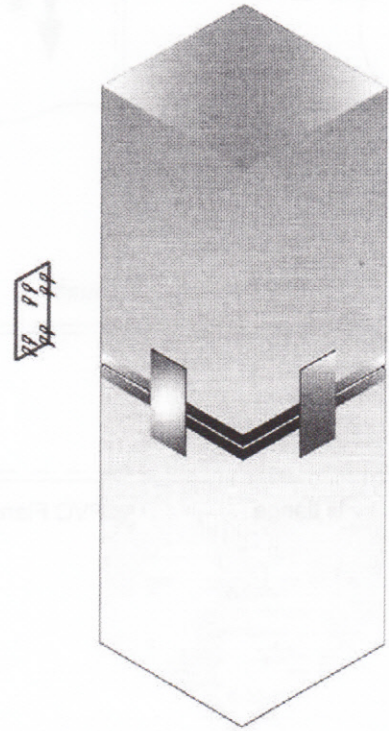
## Detail : B



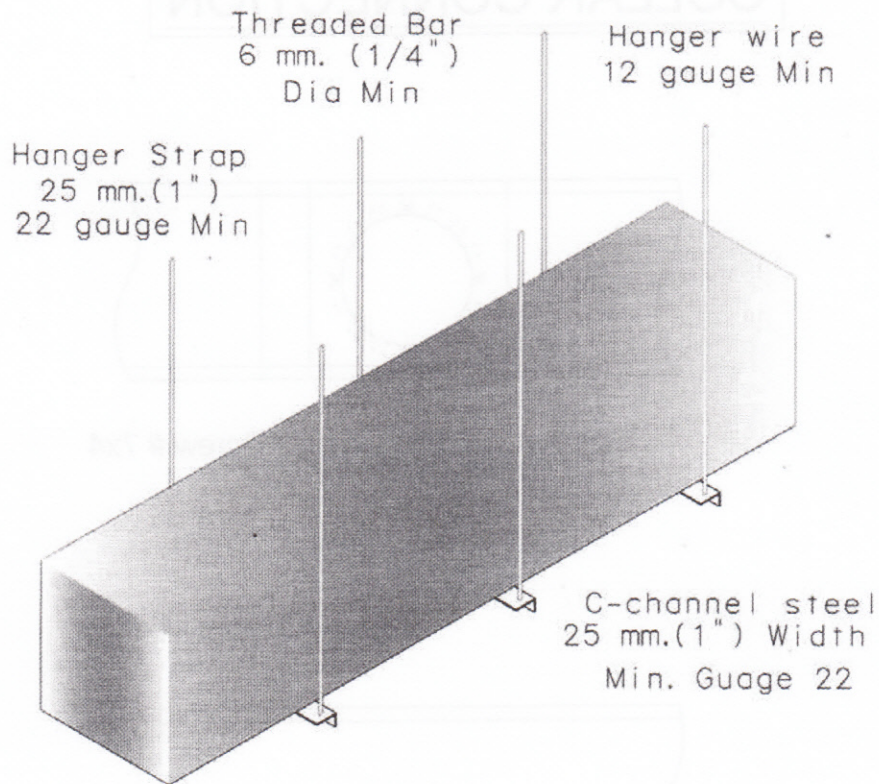
PID REINFORCEMENT SYSTEM IN ALUMINIUM



TIGER CONNECTOR APPLICATION FOR PID DUCT SIZE < 500 mm.





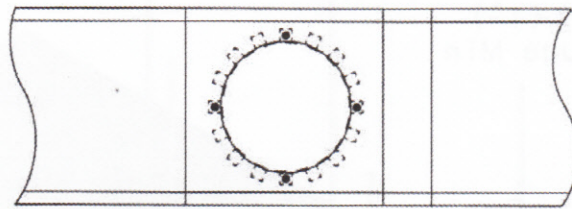


Hanger Spacing

4000 mm. Segment	4000 mm. (13 ft ) max		N/A
1200 mm. Segment	2400 mm. (8 ft ) max	1800 mm. (6 ft ) max	1200 mm. (4 ft ) max

# COLLAR CONNECTION

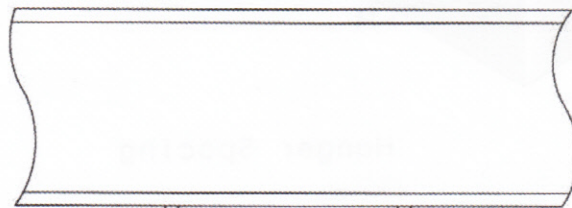
แบบที่ 1



Front View

Screw # 7x4

PID Duct



Screw # 7x4

Silicon

GLUE & Silicone  
PVC OR Galvanize Washer

GALVANIZED

Top View



PVC FLANGE & BAYONET CONNECTION  
FOR PID DUCT SIZE > 500 mm.

